

HUNTER HOMES

live WITH HEART 



\$364,123*

HILLSBOROUGH FACADE

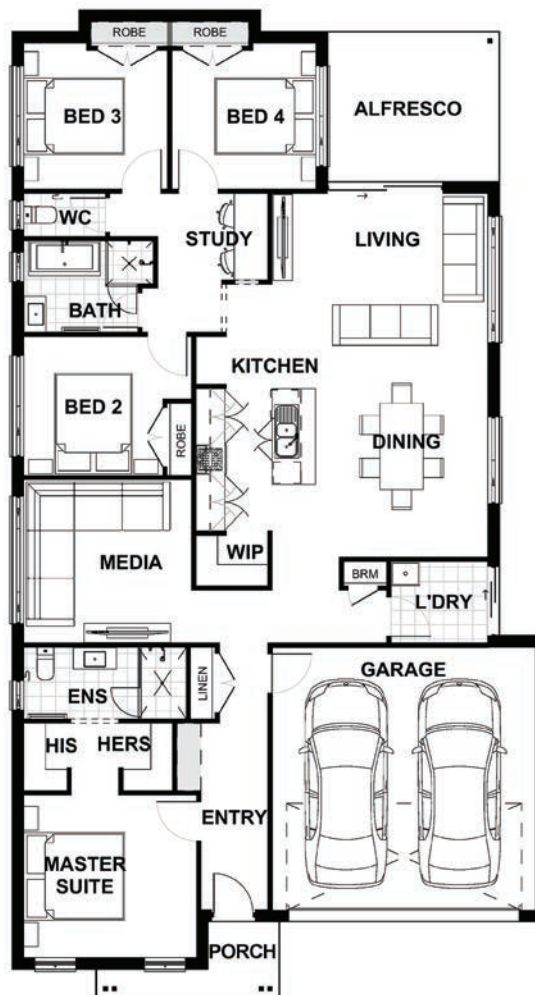
 4  2  2

Total (sq.)	21.99	Width (m)	11.16
Total (m ²)	204.3	Length (m)	20.18

Contact **Tammy Allen**
tammy@hunterhomesnsw.com

Features & Inclusions

- ✓ Experience the Difference!
- ✓ 2590mm High Ceilings
- ✓ Carpet & Tiles Throughout
- ✓ 11.5KW Fujitsu A/C System
- ✓ 45m² Concrete Driveway
- ✓ 2.7KW Solar System
- ✓ 3 Coat Paint System
- ✓ Fisher & Paykel Freestanding Oven, Fridge, Microwave
- ✓ Fisher & Paykel Washer & Dryer
- ✓ 20mm Stone Benchtops
- ✓ Flyscreens to all Windows
- ✓ 35 LED Downlights
- ✓ Freestanding Bath
- ✓ And MUCH more!



Terms and Conditions: Images shown on this brochure are approximate and for illustration purposes only, these plans may not be drawn to scale. Facades and other images on this brochure may be shown as optional upgrades or not included, additional fixtures and finishes that are featured on this document may not be included in the base cost such as landscaping, tiling, decking, furniture, feature lighting, pools, driveways etc. Hunter Homes reserves the right to change plans and inclusions at any time. This package is subject to council approval. All designs that are developed remain the property of Hunter Homes Pty Ltd under copyright law & we retain & claim all rights to these plans. Changing plans by 50% or more does not avoid legal responsibility for a copyright breach.

See our website for Display locations
1300 BUY HOME www.hunterhomesnsw.com

love YOUR HUNTER HOME

House Only - Chelsea 204