

# HUNTER HOMES

live WITH HEART 

LOT 901,  
MEDOWIE, NSW

Land 549m<sup>2</sup>

**\$684,174\***

## BOWMAN

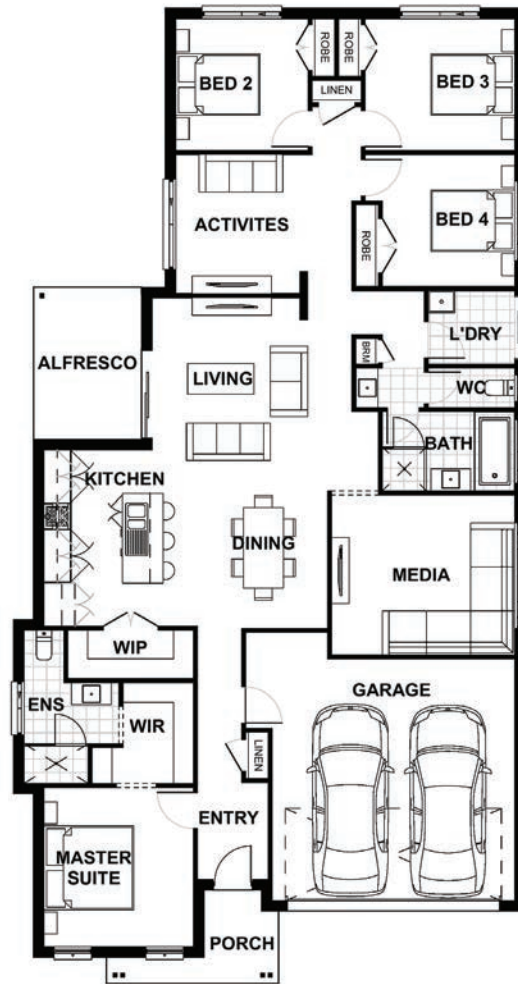


Total (sqs.)	23.64	Width (m)	11.6
Total (m <sup>2</sup> )	219.58	Length (m)	22.15

Contact Tammy Allen  
tammy@hunterhomesnsw.com

### Features & Inclusions

- ✓ Ready to Live Promotion
- ✓ Carpet and Tiles
- ✓ Driveway, Patio & Alfresco Concrete
- ✓ Fujitsu Ducted Air Conditioning
- ✓ 2.7kw Solar System
- ✓ 2590 Ceiling Heights
- ✓ Warmtech Underfloor Heating to Bathrooms
- ✓ Fisher & Paykel Washer & Dryer
- ✓ Fisher & Paykel Dishwasher, Oven & Cooktop
- ✓ 20mm Stone Bench Tops
- ✓ Freestanding Bath
- ✓ Colorbond Roof
- ✓ Downlights



**Terms and Conditions:** Images shown on this brochure are approximate and for illustration purposes only, these plans may not be drawn to scale. Façades and other images on this brochure may be shown as optional upgrades or not included, additional fixtures and finishes that are featured on this document may not be included in the base cost such as landscaping, tiling, decking, furniture, feature lighting, pools, driveways etc. Land estate pricing is subject to the developers guidelines. Hunter Homes reserves the right to change plans and inclusions at any time. This package is subject to council approval. All designs that are developed remain the property of Hunter Homes Pty Ltd under copyright law & we retain & claim all rights to these plans. Changing plans by 50% or more does not avoid legal responsibility for a copyright breach.

See our website for Display locations  
**1300 BUY HOME** [www.hunterhomesnsw.com](http://www.hunterhomesnsw.com)



House and Land - Ellerton 223