



LOT 203
MACADAMIA CIRCUIT
THE GARDENS, MEDOWIE

AVOCA 173 | COSMO

4 Beds 2 Baths 2 Parks 26.3 Squares 12.6m Wide

Land Size: 752m²

\$526,100
Including Land \$215,000



**STUNNING
INCLUSIONS AND
CUTTING EDGE
STYLE**

HOUSE AND LAND PACKAGE INCLUDES:

- ✓ Premium inclusions
- ✓ BASIX and water tank
- ✓ Standard site costs
- ✓ Termite resistant frames and trusses
- ✓ Sarking under roof tiles
- ✓ Large double garage with remote door
- ✓ Flyscreens to all windows and sliding doors
- ✓ 900mm ILVE cooktop & oven
- ✓ ILVE stainless steel dishwasher & microwave
- ✓ Luxurious 20mm stone kitchen & laundry bench
- ✓ Luxurious 20mm stone vanity to bathroom & ensuite
- ✓ Three coat Premium Taubmans paint *(internal walls)
- ✓ Floor to ceiling tiling to bathroom & ensuite
- ✓ Soft close kitchen draws and doors
- ✓ \$5,000 flooring voucher
- ✓ Square set ceiling to living area, bathroom, ensuite and powder room!

Sales Executive
Luke Gow | 0480 293 191
Luke.gow@montgomeryhomes.com.au

\$50k for **\$5k**
of upgrades

AVOCA 173 | COSMO



4 Beds



2 Baths



2 Parks

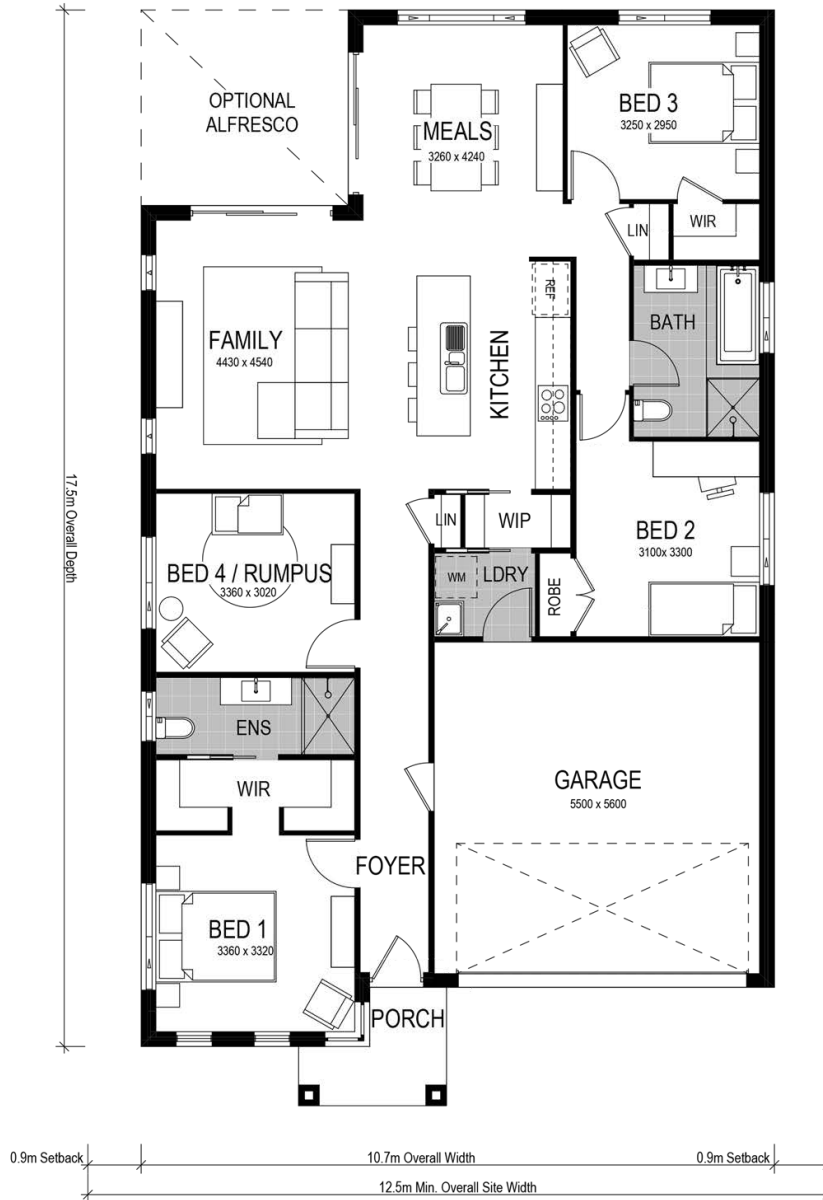
The Avoca 173 This stylish home features an open plan kitchen and living area, plus four bedrooms.

With a secluded master bedroom and ensuite, open plan living, kitchen - featuring a walk-in pantry, and the secondary bedrooms separate to the main living area, this home is perfect for modern family living.



PREMIUM

- ✓ Premium inclusions
- ✓ BASIX and water tank
- ✓ Standard site costs
- ✓ Termite resistant frames and trusses



THE GARDENS MEDOWIE



***CONDITIONS APPLY** This is not a final tender. Montgomery Homes reserves the right to revise plans, pricing and specifications without obligation or notice. Pricing is subject to Council and statutory or regulatory authority requirements (Eg. BASIX, Mines, Bushfire etc). Designs and plans are copyright protected and remain the property of Montgomery Homes Pty Ltd at all times. Images are for illustrative purposes only. Refer to Tender for pricing or inclusions/exclusions regarding external works i.e. turf, landscaping, driveway, retaining walls, and floor coverings, window furnishings and light fittings.