



Ashley 25

HOUSE & LAND PACKAGE

 | 4
  | 2
  | 2



THE GARDENS
MEDOWIE

Address

Lot No 104
The Gardens - Medowie
Lot Size 539sqm

Price

\$576,770

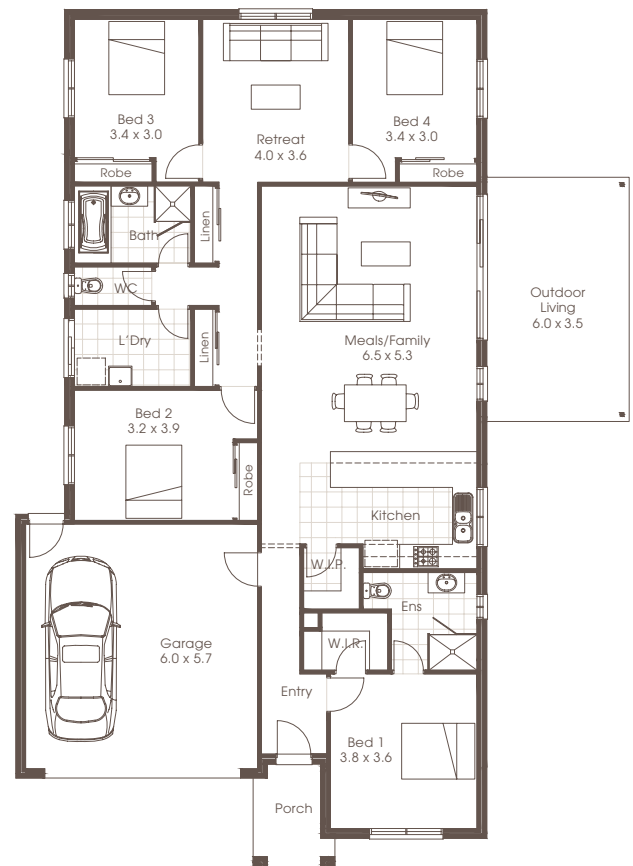
• Image shown depicts Standard facade, House and Land package price is based on the Lifestyle facade.

- Lifestyle Inclusions
- Colorbond roof
- 450mm eaves
- 2.55m ceilings
- Floor coverings and tiles
- Ducted Air-Conditioning
- 600mm Westinghouse stainless steel appliances
- R3.5 batts to ceilings and R2.0 batts to external walls
- 50sqm external natural concrete

For Further Information

Cavalier Homes

Ben Heaft - 0477 745158



Each office is independently owned and operated. Room sizes shown are approximate only, please refer to final working drawings for actual sizes. Plans are protected by copyright. Prices, inclusions and plans are subject to variation without notice. Display/show home designs and inclusions vary throughout Australia and New Zealand and are provided as a guide only. Please refer to your building contract for the specific design and inclusion details of your new home. *Conditions Apply. Contact us for all information regarding the inclusions. Site allowances subject to soil reports & Engineering report. This information sheet is a guide only.

Cavalier Homes Registered Builders in Albury-Wodonga CDB-U 48509 (VIC) 184744C (NSW), Bendigo CDB-U 50034, Greater Western Sydney 332118C, Goulburn Valley CDB-U 51879 (VIC) 316535C (NSW), Goldfields CDB-U 58723, Melbourne West CDB-M 49760, North Coast 209455C, Wagga Wagga 196616C.